

This presentation is a deliverable of the project:

CLOSER TO NATURE:

Hiking in Nature to discover Forestry

ERASMUS-SPORT-2023-SSCP - ERASMUS2027 -
101134603

Funded by the European Union. Views and opinions expressed are however those of the author(s) only and do not necessarily reflect those of the European Union or the European Education and Culture Executive Agency (EACEA). Neither the European Union nor EACEA can be held responsible for them.

HOW TO RUN THIS ACTIVITY

CLOSER TO NATURE PRESENTATION for youngsters:

Guidelines for coaches:

This presentation is designed to guide coaches through interactive activities that teach about forest ecosystem services. The activities are non-frontal and encourage critical thinking in youngsters. These guidelines are meant to inspire coaches, who can use their knowledge to enhance the activities with additional content

- DUPLICATE THIS FILE**
- SAVE IT IN YOUR DRIVE FOLDER**
- ERASE FIRST PAGES**
- MAKE CHANGES IF YOU LIKE!**

IF YOU'RE LOOKING AT THE PDF follow this link for the google drive open FILE

https://docs.google.com/presentation/d/1M0OIRH0oCdyJ4gkqjlilecGUzgkoY2k8qmILcOXH_Os

SLIDE 1: Opening slide with project logo

SLIDE 2: picture of a forest QUESTION: what can you do with this?

ACT: Write in the blackboard the replies and split them in the 3 groups (ecosystem services)

EXPLANATION: Then show them the division and briefly introduce the concept of ecosystem services.

SLIDE 3: picture of a room nowadays QUESTION: List the number of things you see related to the forest

SLIDE 4: in the 30s and then a room QUESTION: List the number of things you see related to the forest

ACT: write in the blackboard the 2 lists - Compare them asking why they think there is less wood now

QUESTION: Where does this wood come from? then and now

SLIDE 5: Map of the world with the normal provenance of some kind of products QUESTION: Not knowing where items come from is another important point

EXPLANATION: Explain the change of relationship with the forest now

SLIDE 6: QUESTION: how is the health of the forests in your Country nowadays? Better or worse than before? More or less occupied area?

SLIDE 7 and 8: Pics and then gif of blank map of forests size in Europe(1900 - 2020)

1900 - 5 million ha | 2020 over 11 million ha in forest covered surface

ACT: Ask why this change - and write it in the blackboard

EXPLANATION: Explain that in the past wood was a scarce and valuable resource (recall the 1st slide)

SLIDE 9: More intangible things that forest provide:

Climate mitigation - Floods prevent - Biodiversity - Natural dynamics - Cultural heritage - Landscape - Carbon storage - Wildfire prevention - Recreative

SLIDE 10: Causes, effects and possible solutions of major problems involving forests QUESTION: Open discussion about each problem

SLIDE 11: Ecosystem Services printout - USEFUL tool to print and give to the youngsters, give a sense of how many fields of life are integrated with forest

Ecosystem services CARD GAMES - BONUS ACTIVITY

SCOPE: Connect pictures with the words

ACT: Group activity:

Print out 1 set of ecosystem services and put each on a different part of the space you're running the activity (room, field, etc..)

Print out many sets of pictures (must have at least $\frac{3}{4}$ participant to the activity) YOU CAN ADD LOCAL FOREST PICTURES

Shuffle the pictures and let the youngsters travel through the space to match their picture with the correspondent ecosystem service.

EXPLANATION: Share and discuss the results, some pictures can go to different ecosystem service because they're connected

LAST SLIDE: Closing slide with project logo



Co-funded by
the European Union

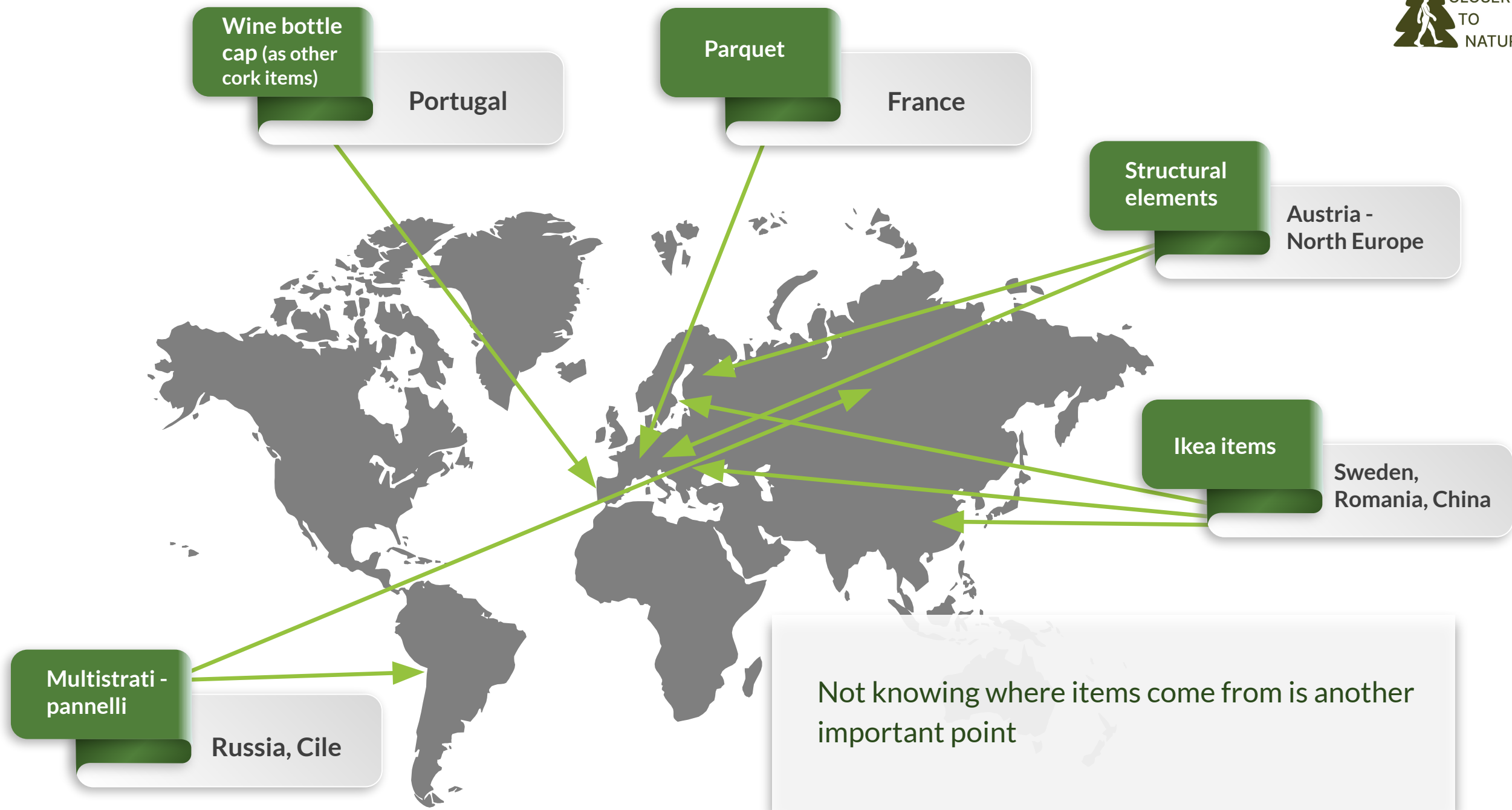


What can you do with this?

List the
number of
things you
see related
to the forest

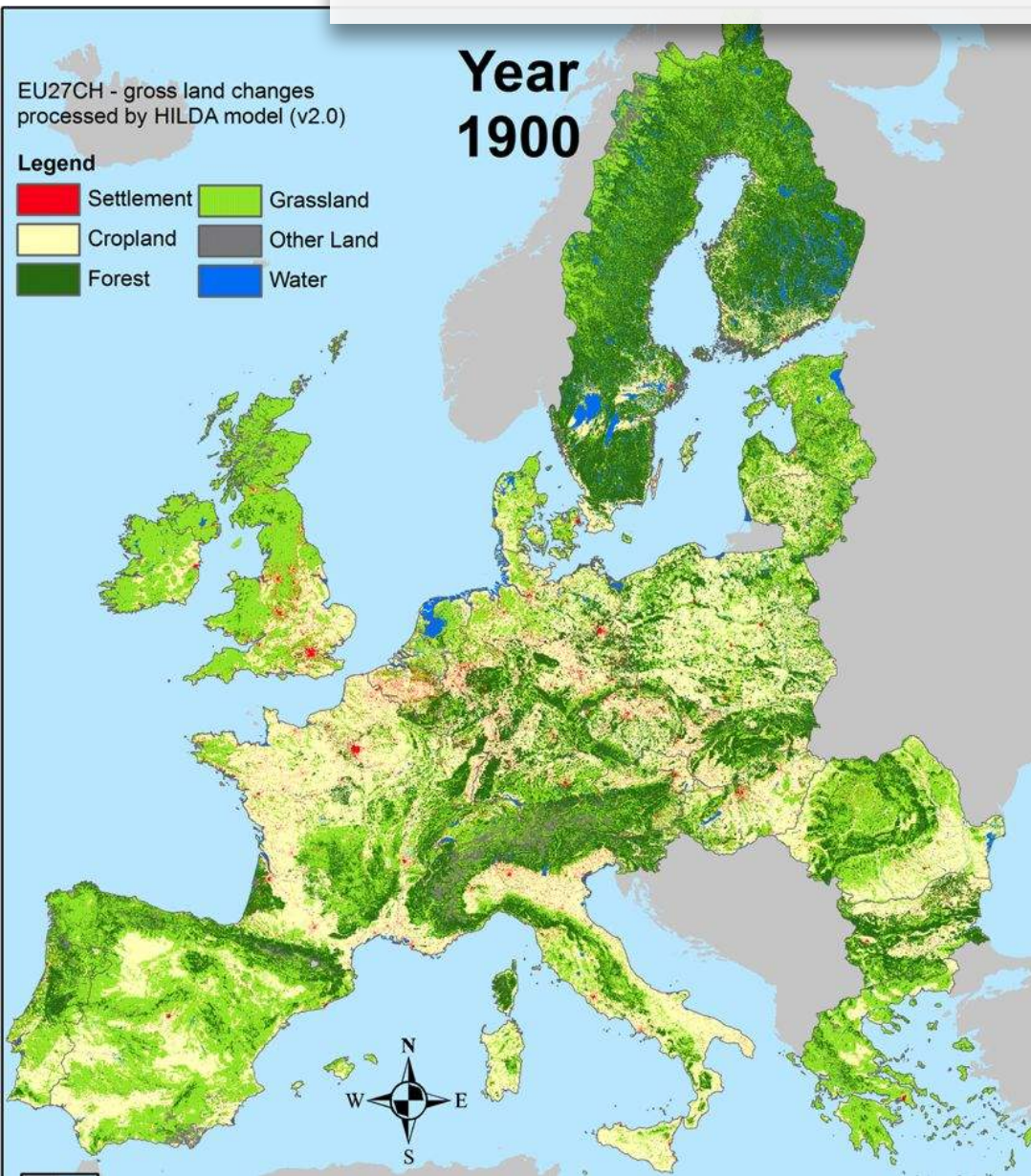


List the
number of
things you
see related
to the forest

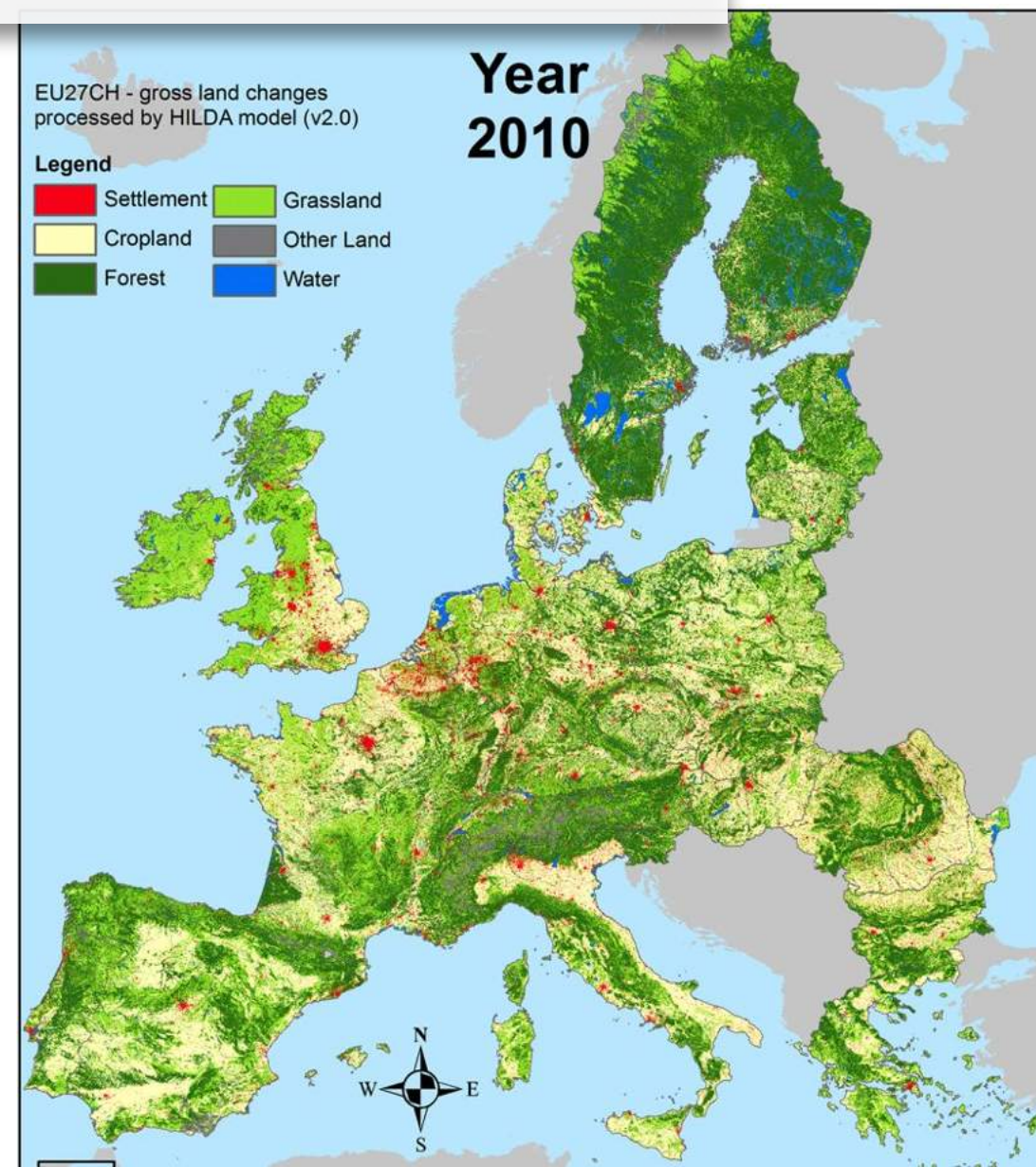


How is the health of the forests in your
Country nowadays?
Better or worse than before?
More or less occupied area?

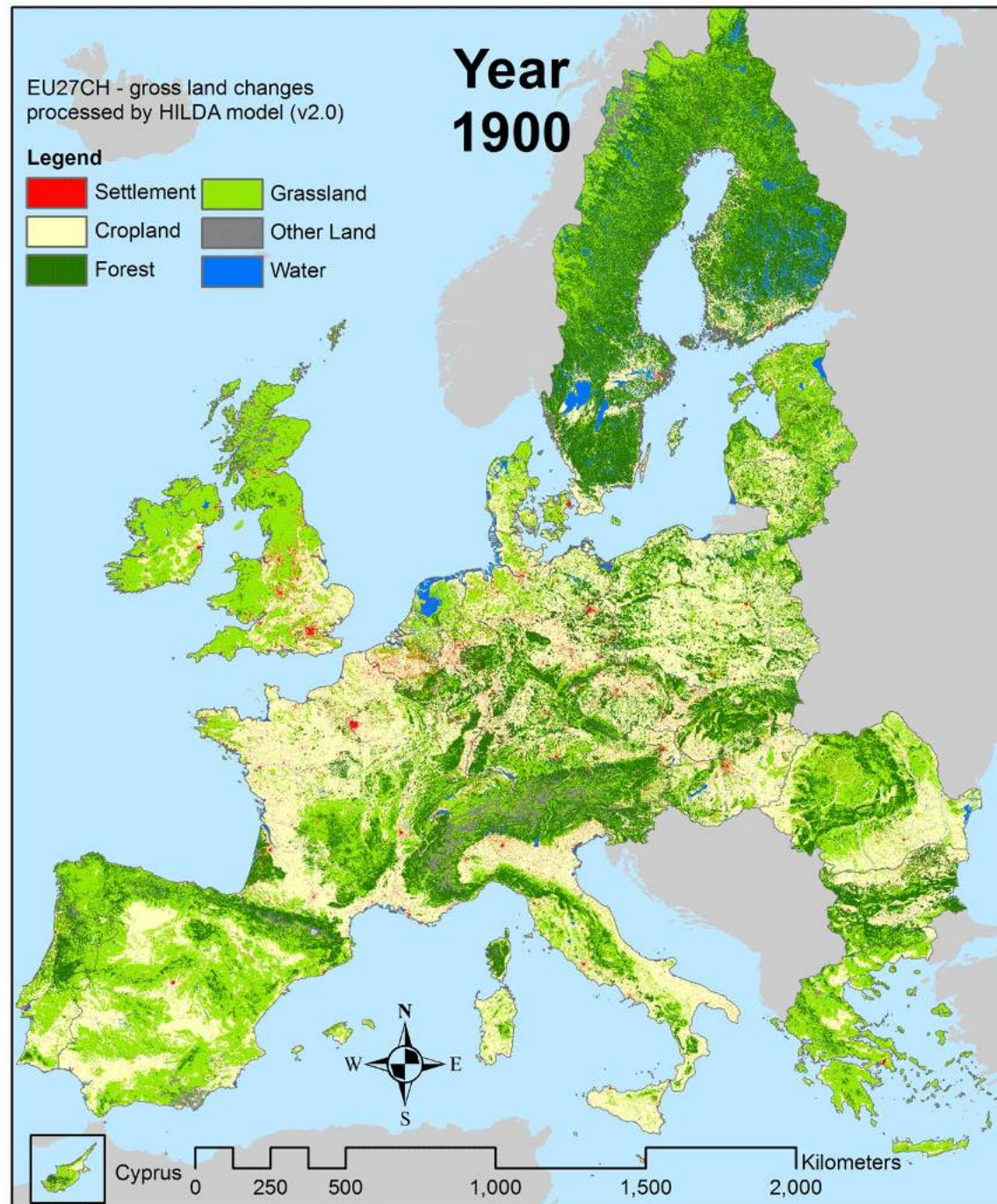
1900 - 5 million ha in forest
covered surface



2020 over 11 million ha
in forest covered surface

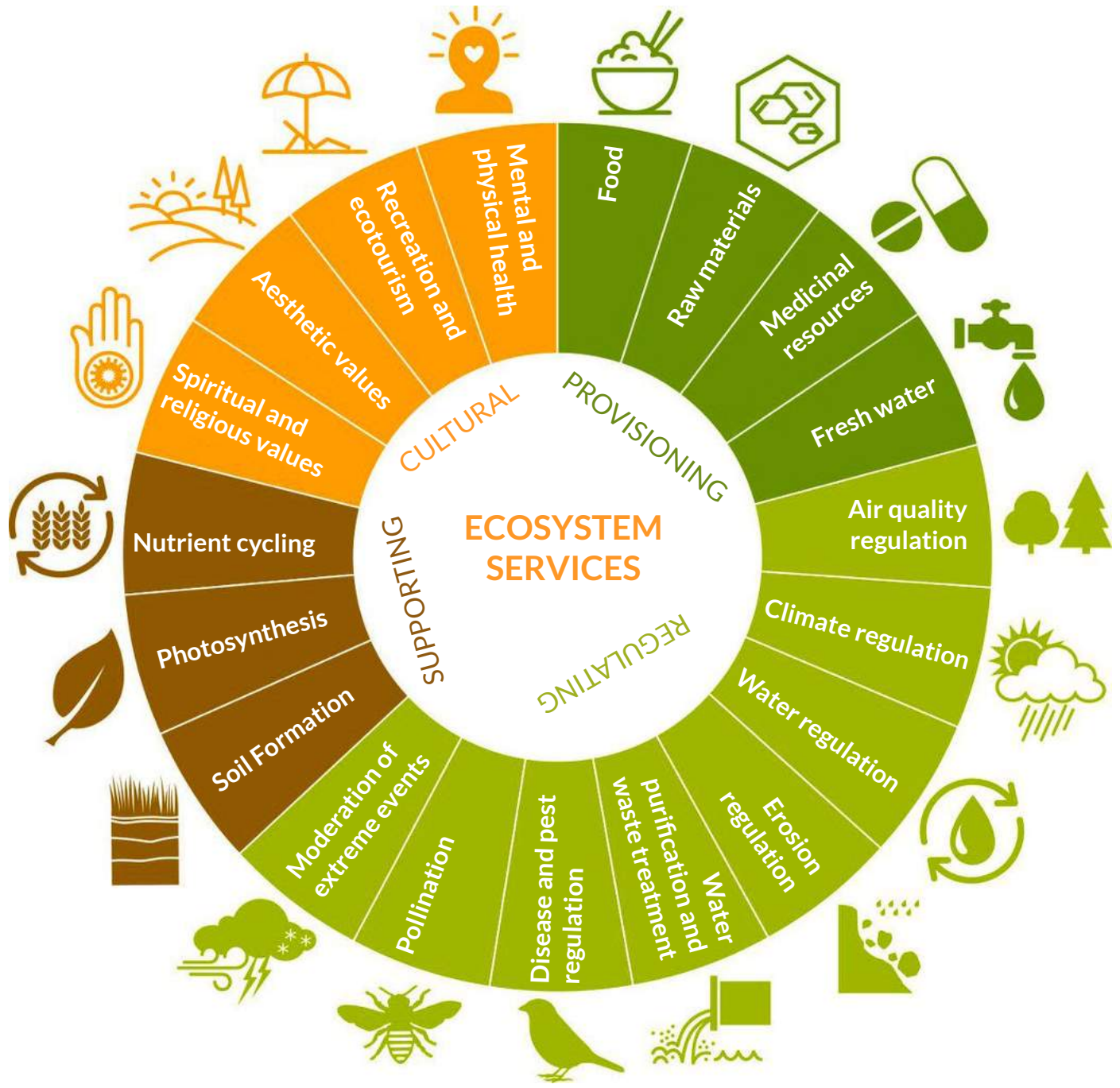


EU forest covered surface from 1900 to 2020





	Causes	Effects	Solutions
Floods	<ul style="list-style-type: none"> Abandoned rural areas Large wood formations on rivers 	<ul style="list-style-type: none"> Infrastructure and habitat destroying 	<ul style="list-style-type: none"> River & forest management <p><i>Useful Link (ITA):</i> https://youtu.be/6stOR8HtxP8?si=ufnqAGCWb0lwMTXV</p>
Biodiversity loss	<ul style="list-style-type: none"> Infrastructure extension Climate change Unsustainable forest /agricultural management 	<ul style="list-style-type: none"> Loss of species Loss of forest stands resilience Loss many ecosystem services 	<ul style="list-style-type: none"> Improve forest management solutions Finance research activities to detect habitats & species
Carbon storage	<ul style="list-style-type: none"> Soil and wood carbon accumulation 	<ul style="list-style-type: none"> Climate mitigation 	<ul style="list-style-type: none"> Keep the carbon storage as long as possible thanks to wood recycling
Wildfire	<ul style="list-style-type: none"> Abandoned rural areas Missing of forest management Warmer climate 	<ul style="list-style-type: none"> Loss of all forest benefits for human and animals Large CO2 emission 	<ul style="list-style-type: none"> Fire-based solutions for forest management <p><i>Useful Link (ENG):</i> https://youtu.be/3tS1jeipLPE?si=-RQNTkURXLisvx4</p>



Ecosystem services CARD GAMES



CULTURAL



PROVISIONING



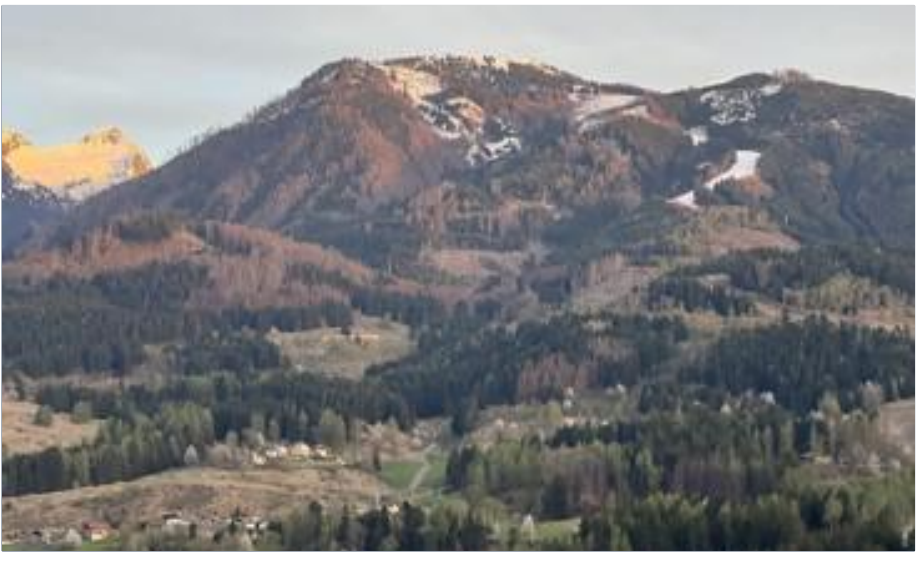
SUPPORTING



REGULATING



Ecosystem services CARD GAMES



Ecosystem services CARD GAMES





Ecosystem services CARD GAMES



Ecosystem services CARD GAMES



Ecosystem services CARD GAMES



Co-funded by
the European Union

